

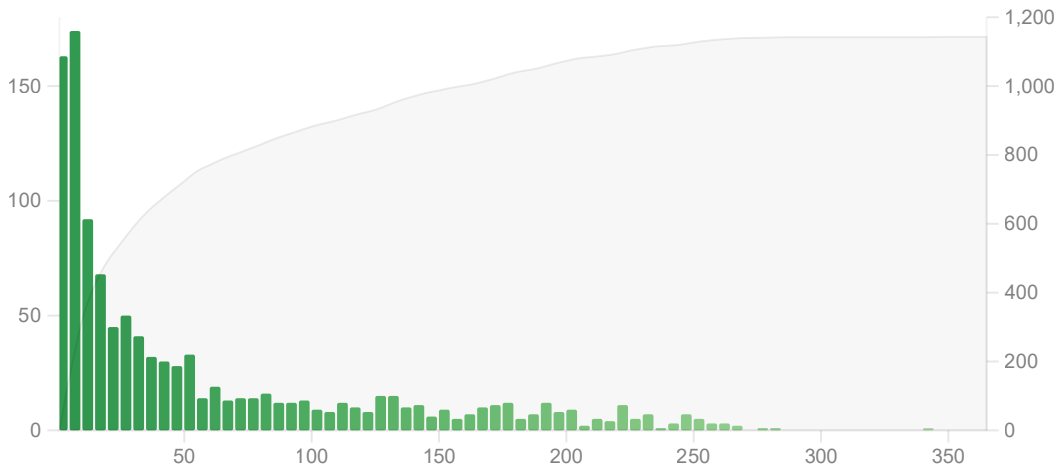
Today

Studied 94 cards in 23.32 minutes today (14.88s/card)
 Again count: 13 (13.83%)
 Learn: 28, Review: 60, Relearn: 6, Filtered: 0
 Correct answers on mature cards: 7/9 (77.78%)

Future Due

The number of reviews due in the future.

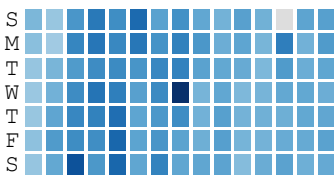
1 month
 3 months
 1 year
 all



Total: 1,143 reviews
 Average: 3 reviews/day
 Due tomorrow: 54 reviews

Calendar

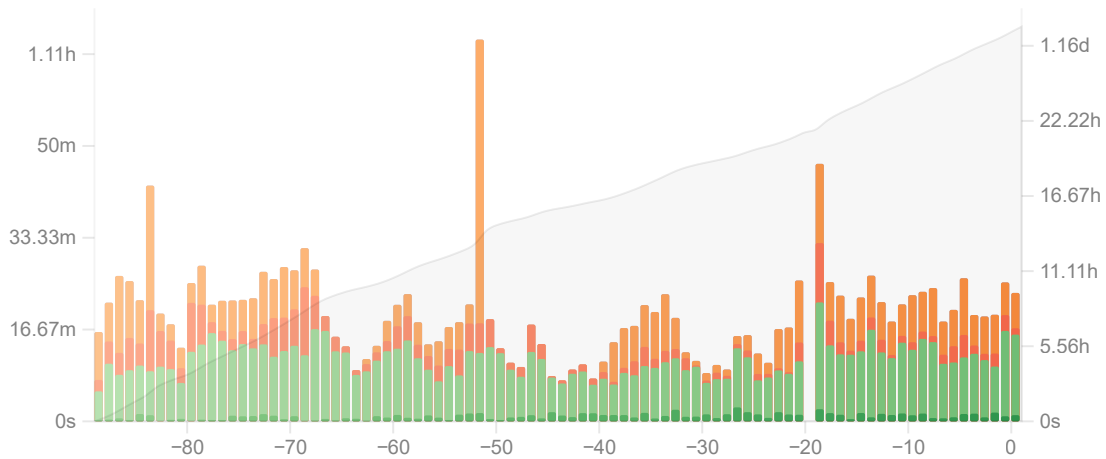
2023



Reviews

The time taken to answer the questions.

Time 1 month 3 months 1 year



Days studied: 89 of 90 (99%)

Total: 1.22 days

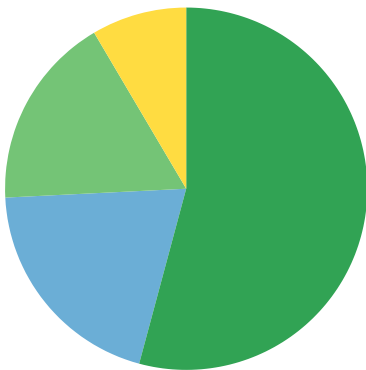
Average for days studied: 20 minutes/day

Average over period: 19 minutes/day

Average answer time: 8.07s (7.44 cards/minute)

Card Counts

Separate suspended/buried cards

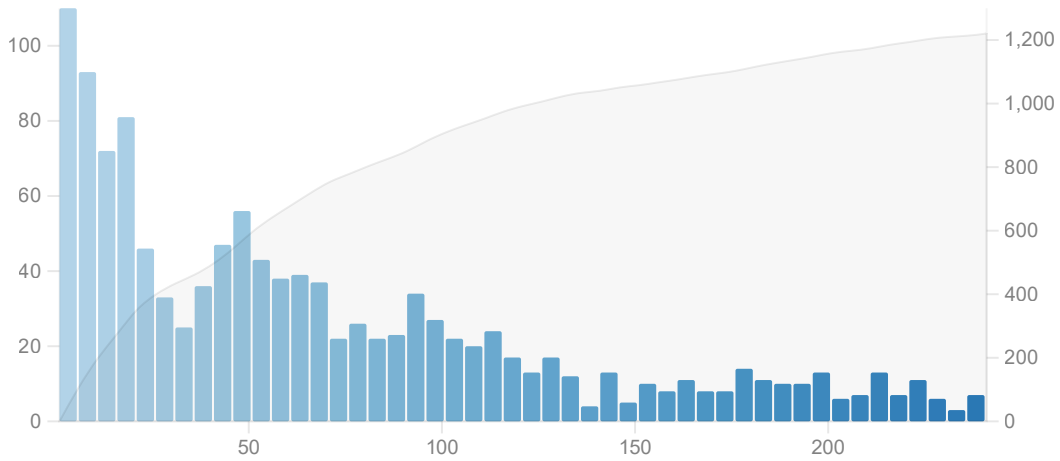


New	321	20.04%
Learning	0	0%
Relearning	0	0%
Young	277	17.29%
Mature	868	54.18%
Suspended	136	8.49%
Buried	0	0%
Total	1,602	

Review Intervals

Delays until reviews are shown again.

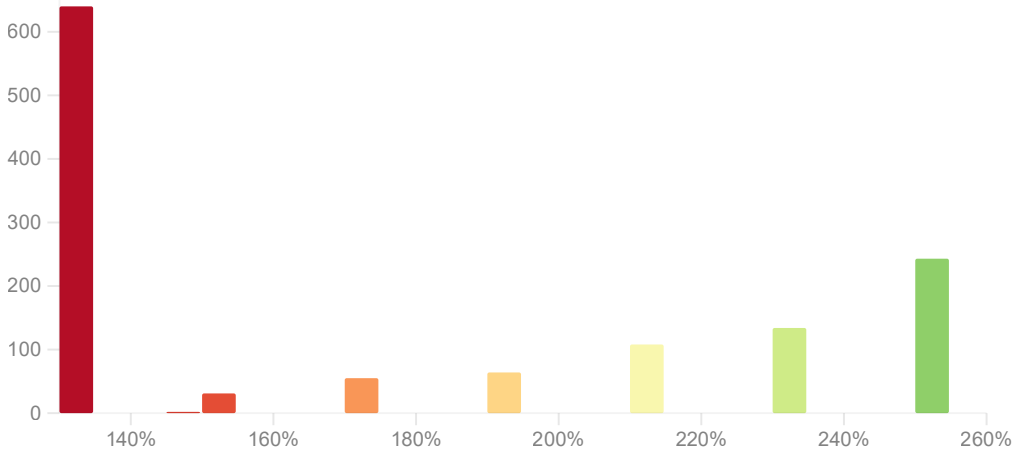
1 month 50% 95% all



Average interval: 2.63 months

Card Ease

The lower the ease, the more frequently a card will appear.

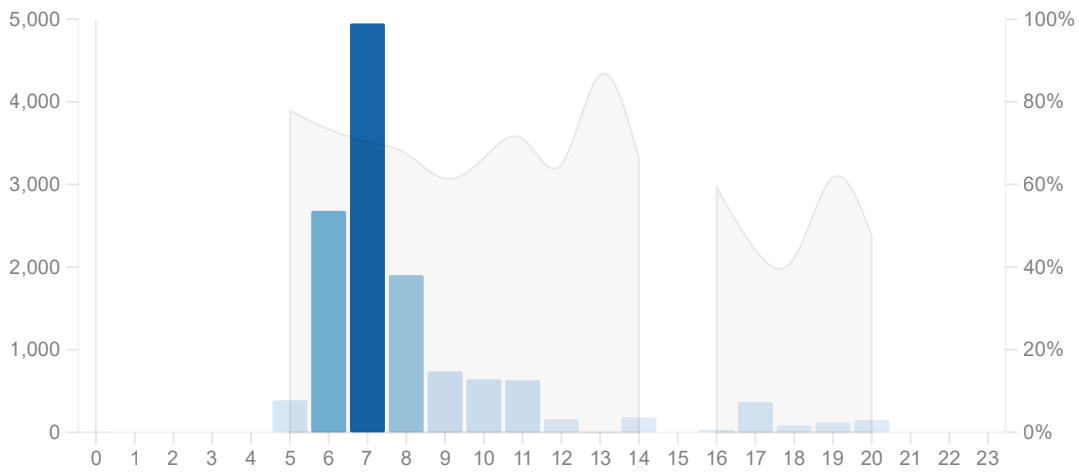


Average ease: 176%

Hourly Breakdown

Review success rate for each hour of the day.

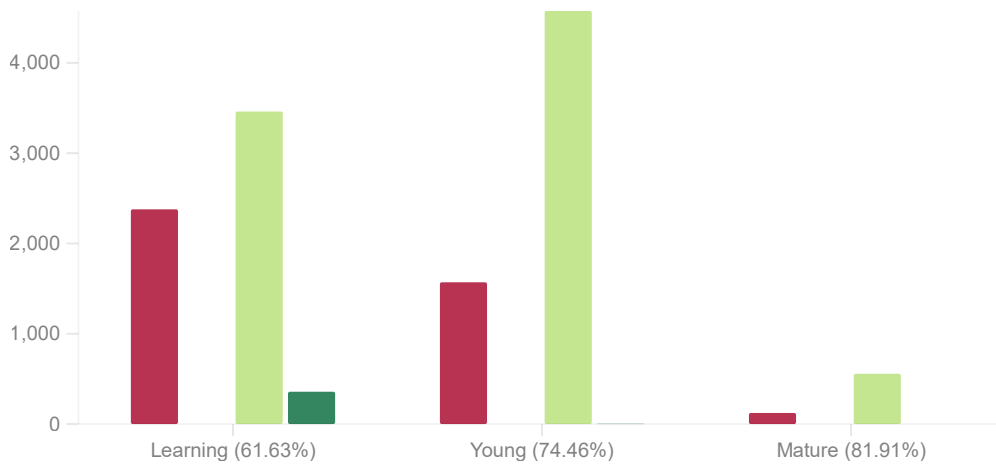
1 month 3 months 1 year



Answer Buttons

The number of times you have pressed each button.

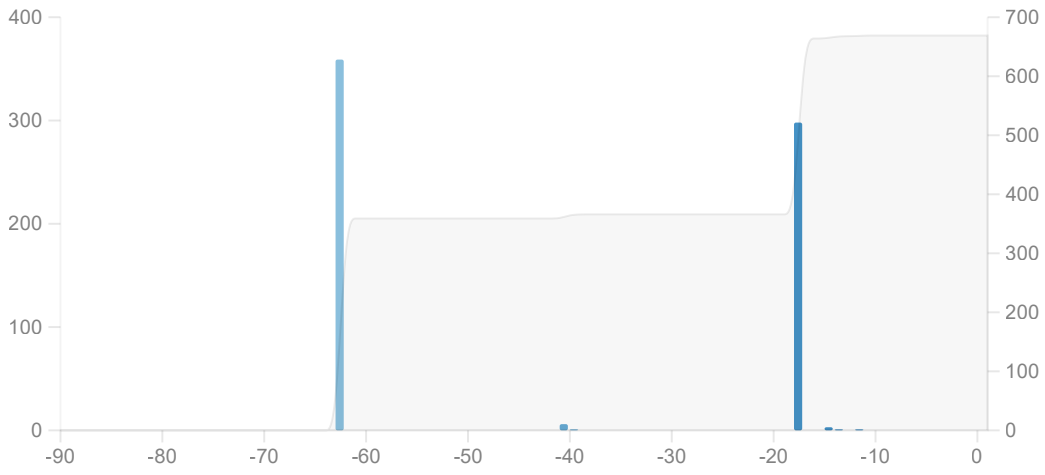
1 month 3 months 1 year



Added

The number of new cards you have added.

1 month 3 months 1 year all



Total: 669 cards

Average: 7 cards/day